



# 2 day itinerary suggestions



## Castles and Gardens of South West Wales

### Day 1 - Neath Port Talbot

[visitnpt.co.uk](http://visitnpt.co.uk)



#### Margam Country Park

A 19th Century Tudor Gothic style mansion set in 850 acres of wonderful parkland. The Castle has some spectacular features such as the vast stair-hall and octagonal tower. Margam Country Park is also home to an 18th Century orangery, the ruins of a 12th Century Abbey and pleasant walks for all abilities.

[margamcountrypark.co.uk](http://margamcountrypark.co.uk)



#### Neath Abbey

Neath Abbey ruins is situated only two minutes' drive from the bustling market town of Neath which also has its own castle. Neath Abbey was founded in 1130 for Savigny monks and in the 16th Century the grounds were repurposed as a manor house. By 1730 Neath Abbey housed a copper smelting works.

[visitnpt.co.uk](http://visitnpt.co.uk)

#### Gnoll Estate

Gnoll Estate Country Park is situated above the market town of Neath and once belonged to the Mackworth family who were wealthy industrialists. The 18th century cascades that run through the park are its most impressive feature alongside 240 acres of landscaped parkland which hold the ruins of Gnoll House.

[gnollestatercountrypark.co.uk](http://gnollestatercountrypark.co.uk)



#### Aberavon Sunken Gardens

Aberavon Sunken Gardens is a tranquil formal garden located on Aberavon Seaford since the 1950's. The Sunken Garden was redesigned in 2012 to create a modern seaside garden. Aberavon Seaford offers a 2 mile long promenade with a variety of places to eat and enjoy the views over Swansea Bay.

[visitnpt.co.uk](http://visitnpt.co.uk)



### Overnight in Neath or Swansea

### Day 2 - Swansea Bay

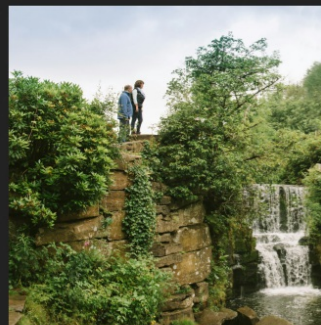
[visitswanseabay.com](http://visitswanseabay.com)



#### Singleton Botanical & Clyne Gardens

Singleton's colourful and diverse herbaceous borders and glasshouse collections are justly famous for their seasonal bedding displays. Clyne Gardens are the internationally recognised home of National Plant Collections, including enkianthus and rhododendrons, set in beautiful parkland.

[visitswanseabay.com](http://visitswanseabay.com)



#### Penllergare Valley Woods

Penllergare Valley Woods is a picturesque landscape hidden away in a steep valley, with its lake and waterfall, terraces, panoramic views, exotic trees and shrubs, this forgotten Victorian paradise is being slowly restored and brought back to life by the Penllergare Trust.

[visitswanseabay.com](http://visitswanseabay.com)

#### Oystermouth Castle

Impressively situated with views across Swansea Bay, the castle features ancient graffiti art from the 14th century. A medieval maze of deep vaults and secret staircases and a 30ft high glass bridge leading to a majestic tracery window in the Castle's chapel.

[visitswanseabay.com](http://visitswanseabay.com)



#### Gower Heritage Centre

Features include guided tours of an 800 year old corn and saw mill, powered by a working waterwheel and an operational Woollen Mill. Artisan workshops keep ancient skills alive, including at a blacksmith's smithy and in the Woollen Mill.

[visitswanseabay.com](http://visitswanseabay.com)





# 2 day itinerary suggestions



## Castles and Gardens of South West Wales

### Day 1 - Carmarthenshire

[discovercarmarthenshire.com](http://discovercarmarthenshire.com)



#### National Botanic Garden of Wales

An inspiring range of themed gardens, the world's largest single-span glasshouse, new tropical Butterfly House and a national nature reserve, all set in a Regency landscape.

[botanicgarden.wales/](http://botanicgarden.wales/)



#### Aberglasney Gardens

A renowned plantsman's paradise with a unique Elizabethan cloister garden at its heart, Aberglasney has 10 acres of magnificent gardens and a tropical Ninfarium.

[aberglasney.org](http://aberglasney.org)

#### Dinefwr Park and Newton House

In the care of the National Trust, a National Nature Reserve, historic house and 18th-century landscape park, enclosing a medieval deer park. Also, home to Dinefwr Castle.

[nationaltrust.org.uk/dinefwr](http://nationaltrust.org.uk/dinefwr)



#### Carreg Cennen Castle

Standing majestically some 900 ft above the River Cennen with 60 mile panoramic views across to the Preseli Hills in the west and the remote Black Mountain to the south

[carregcennencastle.com/](http://carregcennencastle.com/)



## Overnight in Carmarthenshire or Pembrokeshire

### Day 2 - Pembrokeshire

[visitpembrokeshire.com](http://visitpembrokeshire.com)



#### Stackpole Walled Gardens

The 6 acre walled garden on the Stackpole Estate was created around 1770 to provide vegetables and fruit for Sir John Campbell (Lord Cawdor) and his family. The garden has been leased from the National Trust since 1987 to provide local adults with learning disabilities, practical experience and qualifications in horticulture.

[visitpembrokeshire.com](http://visitpembrokeshire.com)



#### Dyffryn Fernant Gardens

Critically acclaimed by Gardeners' World, the 6 acre garden incorporates a wide range of planting including a bog garden, ornamental grass field, ebullient colour, an exotically planted courtyard and fernery.

[dyffrynfernant.co.uk/](http://dyffrynfernant.co.uk/)

#### Pembroke Castle

Birthplace of Henry VII and idyllically set on the banks of the river estuary, this mighty fortress is steeped in British history - a labyrinth of passageways and towers and astounding views from the Great Keep.

[pembroke-castle.co.uk/](http://pembroke-castle.co.uk/)



#### Hilton Court Gardens

8 acres of woodland, gardens and geodesic tropical dome and stunning ponds, Hilton's a place to relax and unwind.

Entrance to the gardens takes you through a cobbled courtyard housing a photographic gallery, working potter, gift shop and restaurant. You then approach our wooden Scandinavian tearoom with balcony overlooking the gardens.

[hiltoncourt.co.uk/](http://hiltoncourt.co.uk/)



Ariennir gan  
Lywodraeth Cymru  
Funded by  
Welsh Government